

**EAST MIDLANDS GATEWAY  
RAIL FREIGHT INTERCHANGE**

**TRAFFIC MANAGEMENT**

**Planned Works and Night  
Closures Review**

- **W/C Mon 11<sup>th</sup> Dec 17**
- **W/C Mon 18<sup>th</sup> Dec 17**
- **W/C Mon 25<sup>th</sup> Dec 17**



Updated Tuesday 5<sup>th</sup> Dec 17

# EAST MIDLANDS GATEWAY – W/C 11<sup>th</sup> Dec 17



M1 Junc 24a Southbound exit Slip lane 2 closure 24/7

Warren Lane Bridge  
Two way Lights

50MPH A50 N/B 24/7  
Jnc 24 to Main St

M1 Junc 24 Southbound Slip Hard Shoulder closure 24/7  
M1 Junc 24 Southbound Slip Lane 1 closure Daytime Off  
Peak 0930 -1530hrs

**Junc 24 Roundabout.  
Various night time lane  
closures 11<sup>th</sup> – 15<sup>th</sup> Dec**

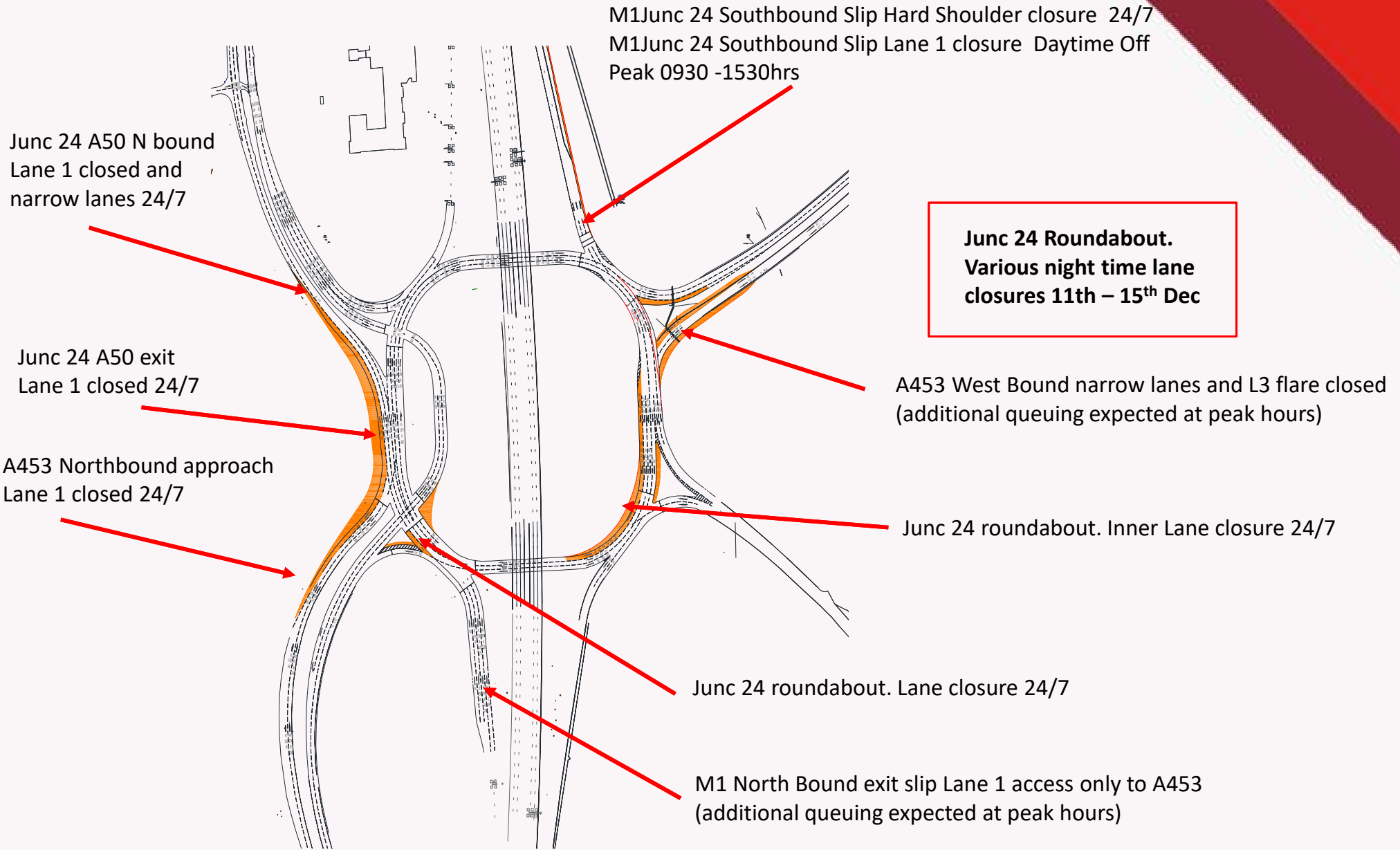
Junction 24 - see Enlarged sheet

50 MPH on A453 jnc24  
to Finger farm rd-ab.

A453 Dual Carriageway Open daytime .  
Ashby Road Open  
Night time closure South bound Only Mon 11th Dec  
17 5 nights 2100 - 0600

Radisson Blu Hotel,  
East Midlands Airport  
Modern pick with...

# Junction 24– W/C Mon 11<sup>th</sup> Dec 17



# EAST MIDLANDS GATEWAY – W/C 18<sup>th</sup> Dec 17



M1 Junc 24a Southbound exit Slip lane 2 closure 24/7

M1 Junc 24 Southbound Slip Hard Shoulder closure 24/7  
M1 Junc 24 Southbound Slip Lane 1 closure Daytime Off Peak 0930 -1530hrs

Warren Lane Bridge  
Two way Lights

50MPH A50 N/B 24/7  
Jnc 24 to Main St



**Junc 24 Roundabout.**  
Various night time lane closures 18<sup>th</sup> – 20<sup>th</sup> Dec

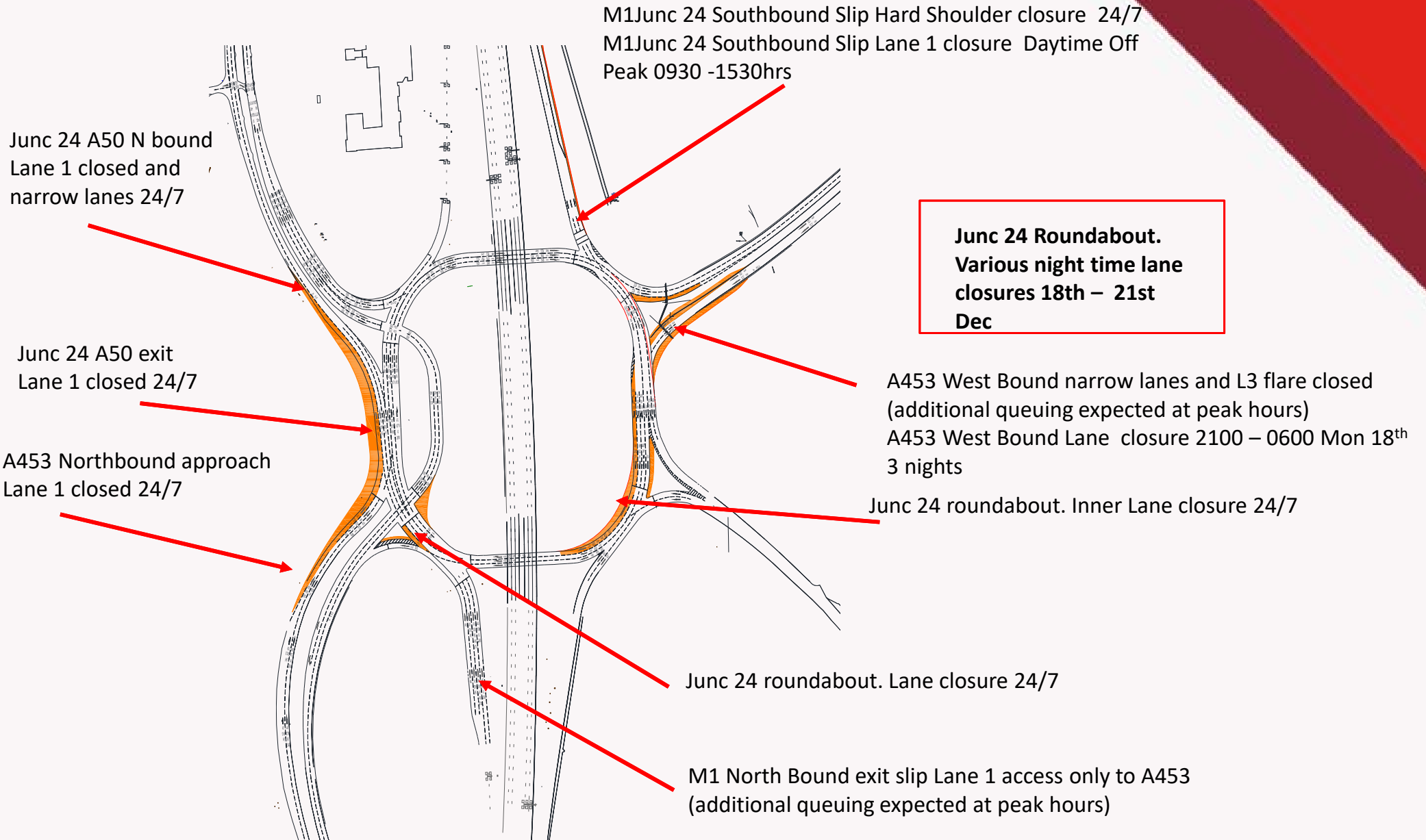
Junction 24 - see Enlarged sheet

50 MPH on A453 jnc24 to Finger farm rd-ab.

A453 Dual Carriageway Open daytime .  
Ashby Road Open  
Night time closures North and South Bound  
Mon 18<sup>th</sup> Dec 17 4 nights 2100 - 0600

Radisson Blu Hotel,  
East Midlands Airport  
Modern pick with...

# Junction 24– W/C Mon 18<sup>th</sup> Dec 17



# EAST MIDLANDS GATEWAY – W/C 25th Dec 17

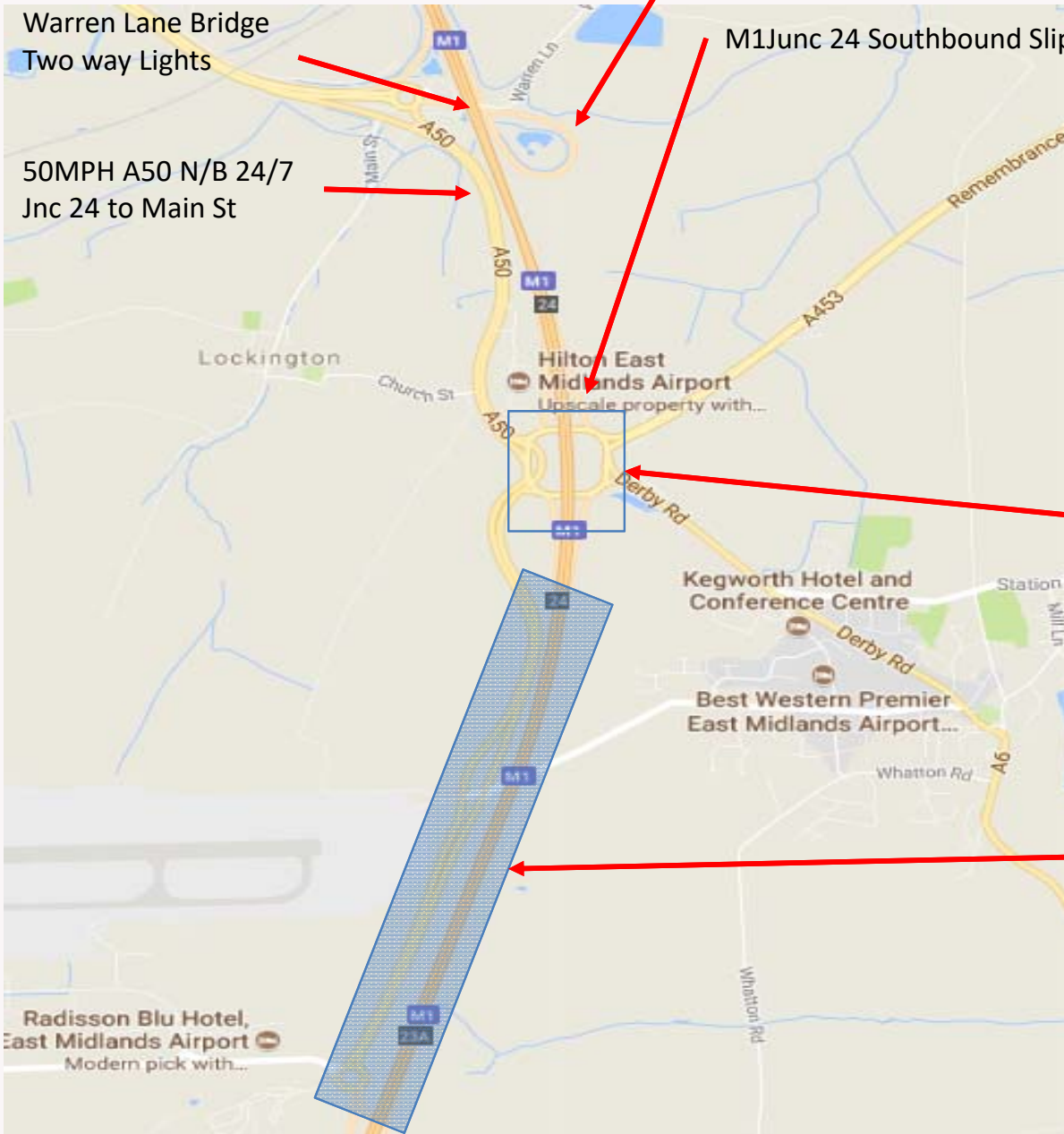


M1 Junc 24a Southbound exit Slip lane 2 closure 24/7

M1 Junc 24 Southbound Slip Hard Shoulder closure 24/7

Warren Lane Bridge  
Two way Lights

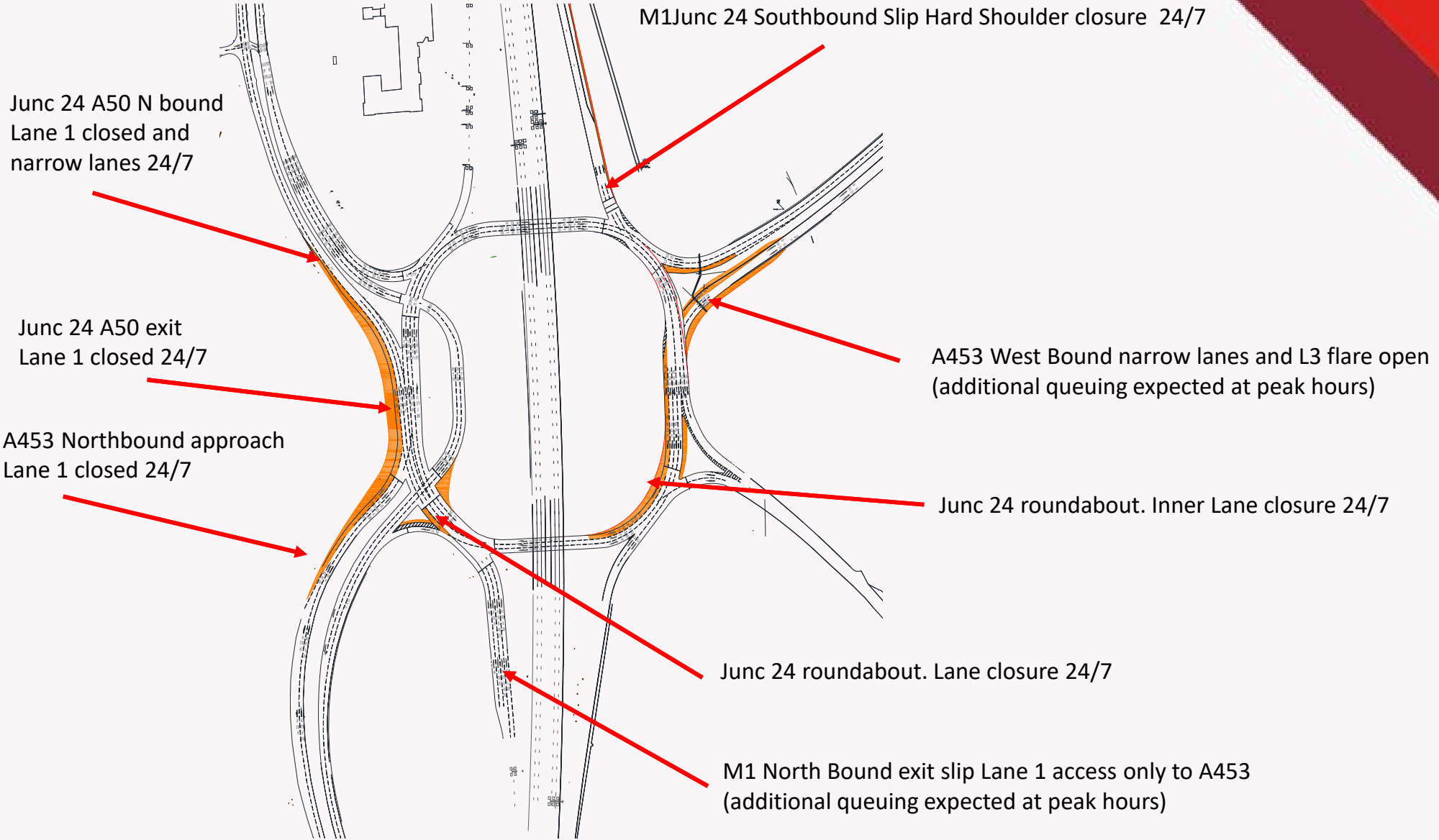
50MPH A50 N/B 24/7  
Jnc 24 to Main St



Junction 24 - see Enlarged sheet

A453 Dual Carriageway Open

# Junction 24– W/C Mon 25<sup>th</sup> Dec 17



# Further Information

## Contacts,

Tel EMG Enquiries  
- 07514227681

E-mail  
- [emg-enquiries@winvic.co.uk](mailto:emg-enquiries@winvic.co.uk)

Web East Midlands Gateway specific  
- [www.eastmidlandsgateway.co.uk/community/travel.php](http://www.eastmidlandsgateway.co.uk/community/travel.php)

Web on the day of travel  
- [www.roadworks.org/](http://www.roadworks.org/)  
- [www.trafficengland.com/](http://www.trafficengland.com/)

## Project updates,

A project update if you wish to be added please e-mail request to above address.

This will include an overall project update and detailed traffic management plans for the forthcoming weeks including dates and times.

Please note all dates within this document are to be confirmed closer to the time